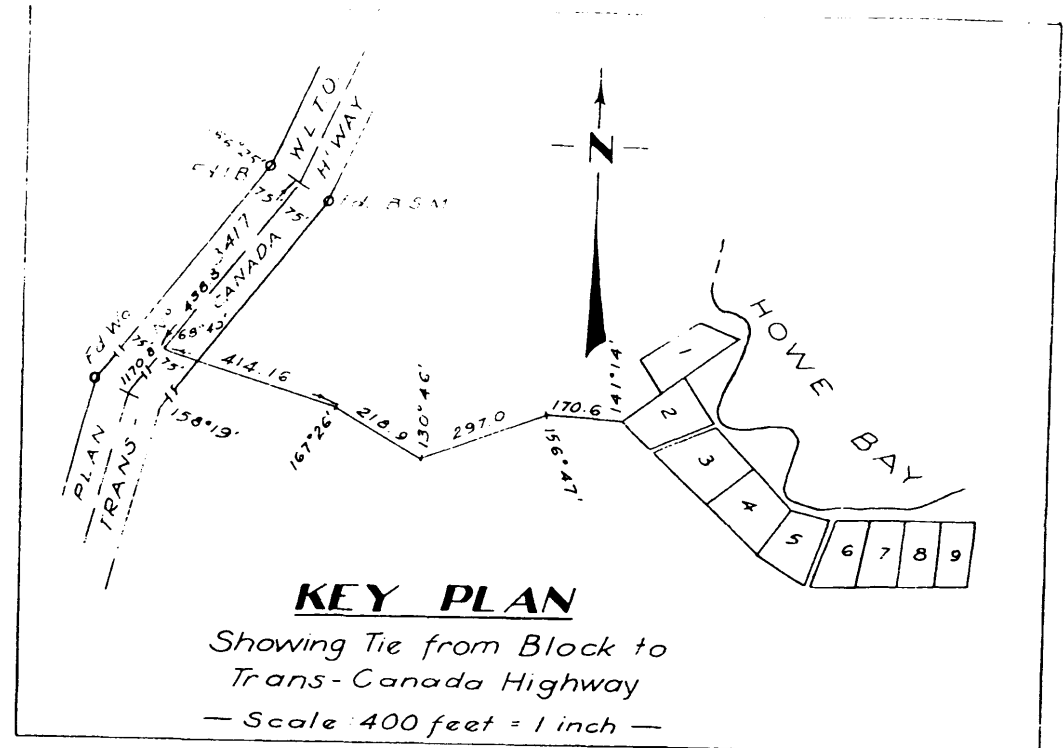


S. 1/2 Sec 28, Twp. 9, Rge. 17 E.P.M

Note
 ■ denotes 3/4" x 3/4" x 24" iron bars.
 ■ R denotes 3/4" x 3/4" x 6" cemented in rock.
 Portions of land available for lease bordered red
 Lots 1 to 5 survey made by E. Gauer, M.L.S., on June 22nd & 23rd 1950.
 Lots 6, 7 & 8: survey made by R.A.F. Tate, M.L.S., on August 13th 1952.
 Lots 6, 7 & 8: resurveyed by E. Gauer, M.L.S., on July 27th 1954.



KEY PLAN
 Showing Tie from Block to
 Trans-Canada Highway
 — Scale 400 feet = 1 inch —

WHITESHELL FOREST RESERVE
 —MANITOBA—
Block 13, Lots 1 to 9
 in S. 1/2 Sec. 28, Twp. 9, Rge. 17 E.P.M.
 (HOWE BAY)
WEST HAWK LAKE
 PLAN 1906
 Scale 100 feet = 1 inch