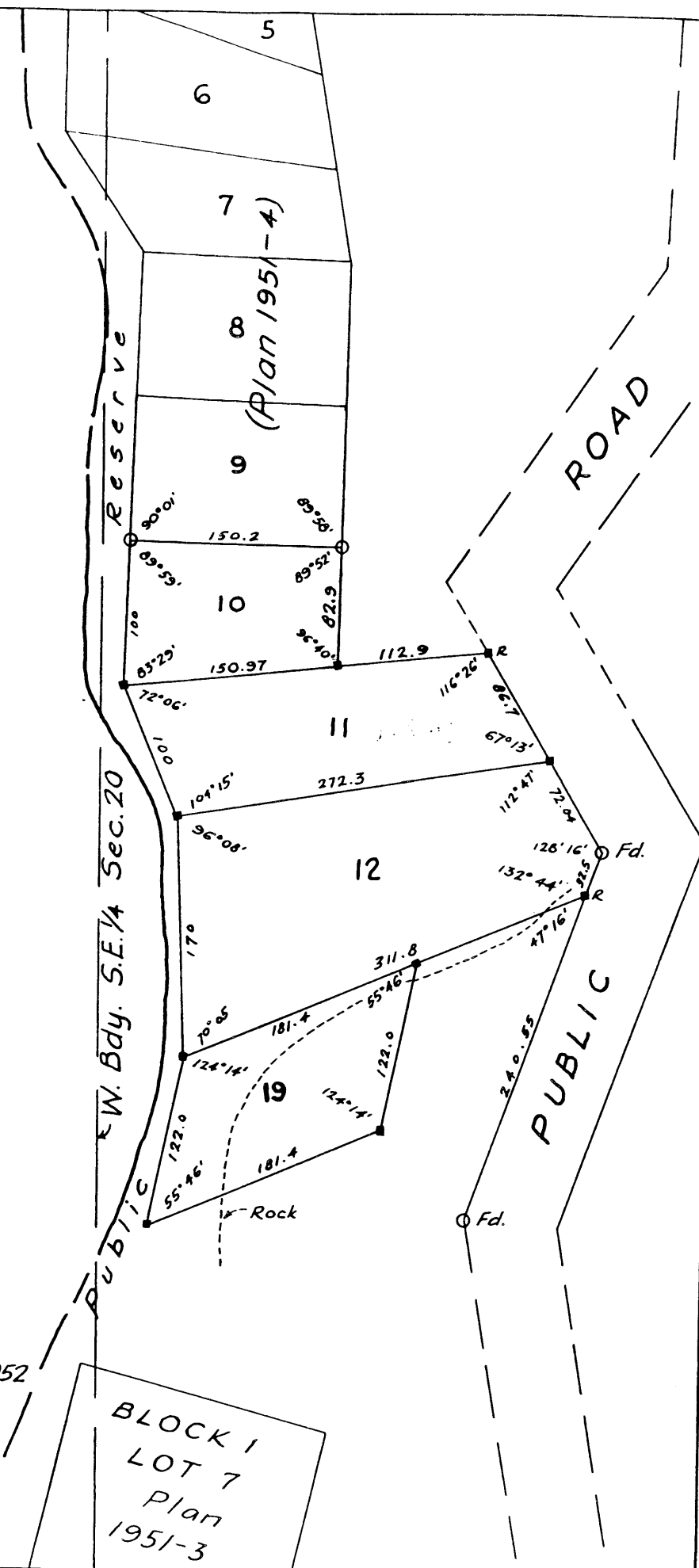




STAR LAKE



S.E. 1/4 Sec. 20
Twp. 9 Rge. 17 E.P.M.

Note:
■--- Denotes Iron Bars 3/4" x 3/4" x 24" long.
■R cemented in rock.
Portions of land available for lease bordered red.
Lot 10 surveyed by G.J. Goldworthy M.L.S. on May 10, 1952
Lots 11-12 & 13 surveyed by R.A.F. Tate M.L.S. on August 26, 1952

BLOCK 1
LOT 7
Plan
1951-3

WHITESHELL FOREST RESERVE
MANITOBA
Block 2, Lots 10-11-12 & 19
in S.E. 1/4 Sec. 20, Twp. 9 Rge. 17 E.P.M.
STAR LAKE
PLAN 1951
Scale: 100ft=1inch.