

# KEYSTONE Surveys

425 Main Street  
Windsor, Manitoba  
R5G 1S3  
August 30, 2006

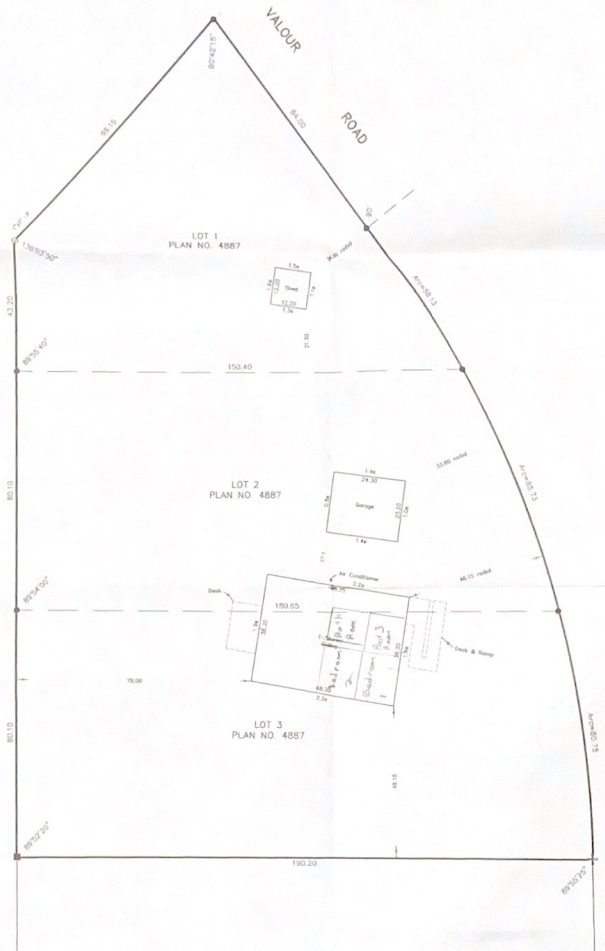
Established in Steinbach since 1975

GILBERT J. LANDREVILLE, MANITOBA LAND SURVEYOR

Phone: (204) 508-2117  
Fax: (204) 508-2029  
keystonesurveys.com  
Our File No. 2006, 303



P.T.H. No. 44



MISSION ROAD

ROAD  
LATH ROYALTY TO BE SET  
BY THE SURVEYOR  
BY THE SURVEYOR  
BY THE SURVEYOR

Distances are in feet and decimals of a foot.  
All plans referred to are on record at the District of Surveyors Office.  
Survey monuments found on the ground are described and shown thus:   
Iron pins, 1/2\"/>

Field Book: 1943/1  
© GILBERT J. LANDREVILLE, M.L.S. 2006  
All rights reserved. No portion may be reproduced, stored, transmitted, or otherwise used in any form or by any means, electronic or mechanical, including photocopying, recording, or by any information storage and retrieval system, without the prior written permission of the author.

Gilbert J. Landreville  
Manitoba Land Surveyor